

Wyvern

Ergonomics



Ergonomic Products Brochure



Introduction	4	RH Range	24	Desks & Worksurfaces	40
Chairs	5	RH Logic 300/400	25	Fixed Height Desks	41
Ergochair Range		RH Mereo 200/220	26	Height Adjustable Desks	42
Ergofit	6	RH Activ 200/220/222	27	Meeting Areas	43
Ergofit Adaptations	7	RH Adaptations		Soft Seating & Receptions	44
Adapt200	8	HÅG Range	28	Peripherals	45
Adapt200 Adaptations	9	SoFi	29	Mice	46
Adapt500	10	H03 / H04 / H05		Keyboards	47
Adapt600	11	BMA Range	30	Laptop & Monitor Stands	48
Adapt500/600 Adaptations	12	BMA Axia 2.0 Range	31	Foot & Leg Rests	49
Adapt600 Specialist Adaptations	13	BMA Axia Adaptions		Document Holders	50
Adapt700	14	Hood Mesh Range	32	Headsets	51
Adapt700 Adaptations	15	Mesh i29	33	Other Accessories	52
AdaptLift	16	Mesh V46		Assistive Technology	54
AdaptLift Adaptions	17	Specialist Seating	34	Hearing Support	55
Adapt V600 V Trak	18	HÅG Capisco	35	Visual Support	56
Adapt V600 V Trak Adaptions	19	HÅG Capisco Puls	36	Assistive Software	57
Orangebox Range		RH Support Stool	37	DVRs & Scanning Pens	60
Joy	20	VELA Tango 200 / 500	38	Ergonomic Services	61
Flo	21	Bodybilt 2504 - Big and Tall	39	Ergonomic Chair Quick Guide	62
Eva	22				
Spira Plus	23				

Introduction

What is Ergonomics?

In it's simplest form, Ergonomics is working in a way that puts the minimal amount of stress on your body, for the period of time that you are sat in a position.

To this extent, it is about designing a working environment around an individual, rather than expecting them to adapt to what is already there.

As humans, we are all different, heights, weights, shapes and sizes, no two people are the same, and as such no workstation should be the same either.

In relation to the layout and design of an employees desk set-up, there are many factors that should be considered in order to maximise the ergonomic benefit available to them.

Seating

One of the most obvious alterations that can be made for someone is to change the chair that they sit in - providing a chair with additional back support, a neck rest and arm rests can be very beneficial.

The key aspect when sourcing any chair however is to ensure that the chair is adjustable, one size does not fit all when it comes to seating. To this extent, Wyvern are partners with a selection of Ergonomic Chair manufacturers, allowing us to supply a range of chairs that are best suited to a client's personal needs.



Desks

Sometimes the desk itself can be a hindrance for a user. Ensuring they have enough work space for their work is vital. One effective ergonomic adjustment that can be made however, is to invest in a Height Adjustable Desk.

By allowing a desk to change heights, a user can use it while seated, or standing, allowing for a wide range of working positions, which will help to boost productivity.

If a replacement desk isn't possible, there are options to add height-adjustable functionality to existing desks too.



Peripherals

The range of ergonomic products is endless, from specialist Keyboards and Mice, to Footrests and Wrist Supports, all have their uses, and all can be of great benefit to the correct person.

Talk to us about the issues you or your staff are experiencing, and we can advise the best solutions that may help, it may simply be a change of how they use current equipment, rather than a purchase of anything new.



Ergonomic Chairs

Wyvern are able to offer a broad range of Ergonomic Chairs, suitable for all manner of budgets and medical conditions, browse our ranges today, and let us know if you have any enquiries or requests for customised or adapted options.



adapt200



RHLogic400



adapt600



RHMereo 220



OrangeboxJoy



HÅGCapisco 8107

TAILORED ERGONOMICS AT ENTRY LEVEL PRICES

A completely fresh approach to specifying an office chair, ergoFit offers you menu-driven good ergonomics at entry level. ergoFit is ideal for situations where you need to provide 'best practice' ergonomics for a number of users. With three sizes of backrest and three different seats to choose from, plus a small range of posture enhancing options, ergoFit has truly 'redefined the standard'. There's even a mini-easispec system to get to your perfect combination within just a few minutes.

The following comes as standard: memory foam seat layer, seat depth adjustment, inflatable lumbar cell and independent seat tilt and back angle adjustment.

Just select the size of back, then choose the size of seat you require, and finally select which gas lift you require. In addition, you can add some posture enhancing options such as, coccyx cut out, sacral support cell or air cell seat.

Chair (Base Dimensions)	Small	Medium	Large
Back height (mm)	420 - 500	510 - 590	570 - 650
Seat depth (mm)	410 - 460	440 - 500	490 - 540
Seat width (mm)	460	500	520
Standard 7" Gas Stem	450 - 550mm		
High 9" Gas Stem	480 - 620mm		



Product Options



Armrests



Back



Base



Gas Lift

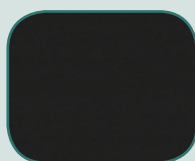


Neckrest



Seat

Standard Colour Options other colour options available



Black



Navy



Royal



Ergofit Adaptations



Mechanism	Code
3-Lever Synchro - As Standard	5
Head & Neck Supports	Code
Neck Roll	N
Arm Options	Code
3D Trigger Arms	T
Rotating Arms	F
Armrest Options	Code
Armrest pad height (above seat mm) 160 - 250 mm	T
Armrest width (between pads mm) 440 - 530 mm (depending pad size)	B
Design Enhancement Options	Code
Upholstered Outer Back	ergoFit Uphback
Polished Aluminium Base	ergoFit Alubase
Back & Seat Postural Options	Code
Coccyx Cut Out	ergoFit CCO
Inflatable Sacral Support	ergoFit Sacral
Air cell Seat	ergoFit Airrest

**Contact Wyvern Business Systems
today for further information**

THE PETITE OPTION FOR SMALLER USERS

Our 'petite' offering, the adapt200 chair offers superb ergonomics for smaller, lighter users who are often not very well catered for in the general ergonomic chair market.

Whether for smaller adults, teens or children, the adapt200 is the perfect solution with a wide range of adaptations which you can select using our easiSpec system.

This chair is supplied on a made-to-measure only basis, handmade around your full set of body dimensions.

Have a look in the sections below for adaptations and to download more information on adapt200.



adapt200 (Regular)

adapt200 (mini)

Chair (Base Dimensions)	Min	Max
Seat depth (mm) (Plus seat slide of approx 40mm)	330	410
Seat width (mm)	270	410
Back height (mm)	370	690
Back width (mm)	270	410

Product Options



Armrests



Back



Base



Gas Lift

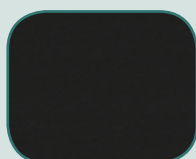


Neckrest



Seat

Standard Colour Options other colour options available



Black



Navy



Royal



adapt200 Adaptations



Seat Options	Code
Coccyx Cut Out - Approx. 120 x 100mm	/CC
Coccyx Comfort Zone	/CZ
Inflatable Thigh Support (double air cell)	/TS
Memory Foam Seat (additional layer)	MFS
Split Seat - min dimensions 410w x 440m (Static 320mm)	SPLIT

Gas Lifts *approximate heights	Code
5" Gas Lifts (360 - 410mm*)	Gas 5"
7" Gas Lifts (430 - 530mm*) - Drop through	Gas 7" DT
9" Gas Lifts (600 - 680mm*)	Gas 9"

Bases and Castors	Code
Brake Loaded Castors (set of 5)	BLC
Brake Loaded Castors (set of 5)	BUC
Lockable Castors (set of 5)	LOC
Soft Wheel Castors (set of 5)	SWC
Footring	FTR
50% Footplate	HFP

ErgoStep - Brake loaded Footrest / Step: (Specify height required when ordering)	Code
Size 1 = Footplate size 200d x 200w mm	STEP1
Size 2 = Footplate size 300d x 300w mm	STEP2
Size 3 = Footplate size 400d x 400w mm	STEP3

Head & Neck Supports	Code
Head Rest	HEADERST
Neck Roll	NECKROLL
Neck Curve	NCURVE

Back Options	Code
Reactive Lumbar Support	/3LUM
Thoracic Support	/THOR
Vertical Support (L,R or Both)	VSL / VSR
Memory Foam Backrest	MFB

Arm Options	Code
Height Adjustable Arms - PU pad	HAA
Rotating Arms	WSARM
HAA Arms + retractable pad	1234
3D Trigger Arms	3DTARM
4D Arms	4DARM
Mobile Support Arms (pair)	MSA
Gel Arm Pads (pair)	GEL
P Shaped Arm Pads (pair)	UPARM

**Contact Wyvern Business
Systems today for
further information**

THE ENTRY LEVEL ADAPT RANGE

The adapt 500 range is our entry level to the world of adapt. Available with a large number of adaptations, the adapt500 range is specified using our easiSpec system.



adapt512
(low back)



adapt521
(high back and neck curve)



adapt531
(with arms and neck curve)

Adapt Model	511	512	521	522	531	532
Seat depth (mm)	440 - 500	470 - 530	440 - 500	470 - 530	440 - 500	470 - 530
Seat width (mm)	480	510	480	510	480	510
Back height (mm)	420 - 500	420 - 500	520 - 600	520 - 600	560 - 640	560 - 640
Back width (mm)	420	420	460	460	465	465

Product Options



Armrests



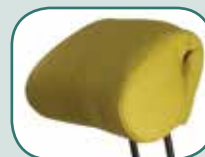
Back



Base



Gas Lift

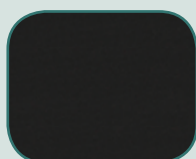


Neckrest



Seat

Standard Colour Options other colour options available



Black



Navy



Royal



UNLIMITED ADAPTABILITY AND CUSTOMISATION

Our flagship adapt product, the adapt600 offers limitless customisation which is achieved by using our easiSpec system to choose the tailored size and any adaptations you need.

The adapt600 range is also where you need to be if you are looking for bespoke adaptations; we can go 'back to the drawing board' to create very specific solutions for seating issues.



adapt620
(with arms and neck curve)



adapt640
(with arms and low back)

Adapt Model	610	620	630	640	650	660	680
Seat depth (mm)	440 - 500	440 - 500	440 - 500	470 - 530	470 - 530	470 - 530	580 - 640
Seat width (mm)	480	480	480	510	510	510	600
Back height (mm)	350 - 410	480 - 540	560 - 620	350 - 410	480 - 540	560 - 620	610 - 670
Back width (mm)	460	460	460	460	460	460	510

Product Options



Armrests



Back



Base



Gas Lift



Neckrest



Seat

Standard Colour Options other colour options available



Black



Navy



Royal



adaptions for 500 / 600



Seat Options - in standard positions	Code
XL Seat 510 wide x 500mm deep	EXSEAT
XXL Seat 610 wide x 610mm deep	EXXSEAT
Coccyx Cut Out - Approx. 120 x 100mm	/CC
Coccyx Comfort Zone	/CZ
Inflatable Thigh Support (double air cell)	/TS
Reduced Seat Width (min 410 mm)	REDD
Reduced Seat Width (min 410 mm with slide)	REDD
Memory Foam Seat (additional layer)	MFS
ErgoCore Seat System	ECORE
Stitched Seat - Standard	SEWNS
Super Memory Foam Seat (stitched)	SMFS

Back Options	Code
Reactive Lumbar Support	/3LUM
Thoracic Support	/THOR
Vertical Support (L,R or Both)	VSL / VSR
Memory Foam Backrest	MFB
Extended Back Bar (+75mm)	EXTD
Reduced Back Width (min 410mm)	RED B
Sacral Support Cell	SACR
Super Memory Foam Backrest (stitched)	SMFB

Arm Options	Code
Height Adjustable Arms - PU pad	HAA
Rotating Arms	WSARM
HAA Arms + retractable pad	1234
3D Trigger Arms	3DTARM
4D Arms	4DARM
Mobile Support Arms (pair)	MSA
Gel Arm Pads (pair)	GEL
P Shaped Arm Pads (pair)	UPARM



Head & Neck Supports	Code
Head Rest	HEADERST
Neck Roll	NECKROLL
Neck Curve	NCURVE
V-Rest	VREST

Gas Lifts *approximate heights	Code
Gas Lift 1 - (Seat Height 430 - 540mm)	GAS1
Gas Lift 2 - (Seat Height 480 - 630mm)	GAS2
Gas Lift 3 - (Seat Height 620 - 820mm)	GAS3

Bases and Castors	Code
Polished Aluminium Base	/CHR
Brake Loaded Castors (set of 5)	BLC
Brake Loaded Castors (set of 5)	BUC
Lockable Castors (set of 5)	LOC
Soft Wheel Castors (set of 5)	SWC

Contact Wyvern Business Systems today for further information

Adaptations for the Adapt600 and AdaptLift Ranges

Seat & Backrest Options: Adapt 600 range only	Code
Channel, Cut-out or Bespoke Coccyx - With Stitched surround	BESPOKECC
Contoured Seat - Foam sculpting to sides plusommel	CONSEAT
Flattened Backrest - Thoracic Foam Infill	FLATB
Foam Sculpting - In any single area/quadrant	SCULPT
Foam Support Wings (pair) - Left & Right	WINGS
Heated Pads - set of 3 (inc holster) - Pad size: 160 x 170 mm	HPS
Internal Sprung Seat - As part of an Adapt Chair	SPR
Massage Chair System (inc holster) - 6 position + single heat pad	MASSAGE
Sewn Backrest - Standard template sizes - Stitched Upholstery with panels	SEWNB
Sewn Backrest - Bespoke - Reduced width/height	BSEWNB
Split Seat - Standard - Reduced width/depth	BSEWNS
Bespoke Split Seat - Contact us with measurements	BSPLIT
Wave Front Seat - Reduced to different depths on each side	WAVE
Armrest & Base Options	Code
AdaptLift Electric Rise & Lift - As part of a complete Adapt 600 chair	ADAPTLIFT
6 Star Base - Nylon Black	6STARB
Adapted Armrest brackets (for pair) - inc or dec 50 mm on: 1234, HAA, 3D & 4D arms	ADARM
Draughtsman Conversion (inc high gas & foot ring)	DTMN
Extended Footplate	EXTFP
Extended Levers (each lever) - on Adapt 600 mechanism	REM
Item	Code
Footring - Height Adjustable	FTR
Footplate 50% includes footring	50%
Heavy Duty Aluminium Base	HDALUB
Heavy Duty Arm Brackets - for seats wider than 510 mm	HDARM
Movement Lock (inc holster)	MLOCK
Replacement feet for Movement Lock - set of 5	MFEET
Swivel Lock - New Style - 7" Stem - Seat Height - 545 - 635 mm	SLOCK7
Swivel Lock - New Style - 9" Sstem - Seat Height - 570 - 690 mm	SLOCK9
Swivel Lock - Traditional Style	SLOCK
General	Code
Anti-Static ESD Chair upgrade	ASTAT
Mni Pump (Battery Powered)	MINIP
Holster (for Mini Pump or Heat Pad Controllers) - included on Heat/Massage chairs	HOLST

THE HEAVY-DUTY OPTION FOR LARGER USERS

Our adapt700 chair offers the perfect heavy-duty solution for larger users.

Tested to 40 stones /250 kg
With a multi-layered foam construct seat, specifically designed for larger users, a heavy duty mechanism and metalwork componentry and an inflatable lumbar support as standard, the adapt700 also offers a good range of adaptations which you select using our easiSpec system.



adapt700

Adapt Model	Min - Std	Max - Std
Seat depth (mm) Includes Seat Slide	420	570
Seat width (mm)	620	620
Back height (mm) Back Height can be cut down to 450mm	600	660
Back width (mm)	560	560

Product Options



Armrests



Back



Base



Gas Lift



Neckrest



Seat

Standard Colour Options other colour options available



Black



Navy



Royal



adapt700 Adaptations

Seat Options - in standard positions	Code
Reduced Seat Depth (min 420 mm)	REDD
Coccyx Cut Out - Approx. 120 x 100 mm	/CC
Bespoke Coccyx Cut Out - Max Width 150 mm	BESP/CC
Coccyx Comfort Zone	/CZ
Inflatable Thigh Support (double air cell)	/TS
Memory Foam Seat (additional layer)	MFS
Sacral Support	SACR

Head & Neck Supports	Code
Head Rest	HEADERST
Neck Roll	NECKROLL
Neck Curve	NCURVE
V-Rest	VREST

Gas Lifts *approximate heights	Code
5" Gas Lifts (520 - 610mm*)	Gas Low
7" Gas Lifts (510 - 640mm*)	Gas Reg
9" Gas Lifts (570 - 710mm*)	Gas Higher

Arm Options	Code
Height Adjustable Arms - PU pad	HAA
Rotating Arms	WSARM
HAA Arms + retractable pad	1234
3D Trigger Arms	3DTARM
4D Arms	4DARM
Gel Arm Pads (pair)	GEL

Bases and Castors	Code
Brake Loaded Castors (set of 5)	BLC
Brake Loaded Castors (set of 5)	BUC
Lockable Castors (set of 5)	LOC
Soft Wheel Castors (set of 5)	SWC



Contact Wyvern Business Systems today for further information

THE ELECTRIC RISE & TILT CHAIR

AdaptLift has been created specifically for people who need a little extra help either with adjusting the height of their office chair or getting in and out of it.

Designed in conjunction with an Occupational Therapist and available as part of the Adapt 600 range, AdaptLift comes as a complete chair with your choice of seat and backrest size. It's also compatible with our AdaptV600 backrests.

It's electronically height and tilt adjustable and features a built-in MLOCK braking system to hold it still. Powered with a high-performance rechargeable battery system, AdaptLift is easy to operate and provides a smooth, assured lift and tilt function.

The tilt range: 4 degrees backward (negative) 20 degrees forward (positive).

Adapt Model	Min - Std	Max - Std
Seat height (mm approx)	490	890
Seat tilt (degrees)	-4	+20
Seat Depth (mm)	450	580
Seat Width (mm)	410	600



adaptLift

Product Options



Armrests



Back

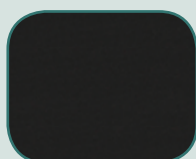


Neckrest



Seat

Standard Colour Options other colour options available



Black



Navy



Royal



Head & Neck Supports	Code
Head Rest	HEADERST
Neck Roll	NECKROLL
Neck Curve	NCURVE
V-Rest	VREST

Arm Options	Code
Height Adjustable Arms - PU pad	HAA
Rotating Arms	WSARM
HAA Arms + retractable pad	1234
3D Trigger Arms	3DTARM
4D Arms	4DARM
Mobile Support Arms (pair)	MSA
Gel Arm Pads (pair)	GEL
P Shaped Arm Pads (pair)	UPARM

Seat Options - in standard positions	Code
XL Seat 510 wide x 500mm deep	EXSEAT
XXL Seat 610 wide x 610mm deep	EXXSEAT
Coccyx Cut Out - Approx. 120 x 100mm	/CC
Coccyx Comfort Zone	/CZ
Inflatable Thigh Support (double air cell)	/TS
Reduced Seat Width (min 410 mm)	REDD
Reduced Seat Width (min 410 mm with slide)	REDD
Memory Foam Seat (additional layer)	MFS
ErgoCore Seat System	ECORE
Stitched Seat - Standard	SEWNS
Super Memory Foam Seat (stitched)	SMFS

Base Unit Technical Spec	Code
Seat Height - Floor to Seat Pad Surface 490 - 890 mm	
Tilt Range - -4 to + 20 Degrees	
MLOCK - LOC	



adaptLift (Tilt)

See page 13 for additional adaptations for this range

Contact Wyvern Business Systems today for further information

UNLIMITED ADAPTABILITY AND CUSTOMISATION

Introducing adapt® with V-Trak, a brand new concept in backrest contouring for a wide range of postural care issues.

The V600 offers all of the well-loved features and adaptations of the adapt 600 range alongside innovative modular backrest technology. With a choice of 9 V-Trak adjustable backrests, this is much more than just a mesh-covered frame, the V600 is breathable yet infinitely adjustable, see the full range of adaptations.



adaptV600



adaptV600 (Side)

Adapt Base Code	V600S Small Seat	V600M Medium Seat	V600XL XL Seat	V600XXL XXL Seat
Seat Width (mm)	480	510	510	610
Seat Depth	440 - 500	470 - 530	500 - 560	610 - 660

Adapt Back Code	Low Back	Med Back	High Back	XL Back
Std	V1/1	V2/1	V3/1	
Contour	V1/2	V2/2	V3/2	
Deep Contour	V1/3	V2/3		V2/3

Product Options



Armrests



Back



Seat

Standard Colour Options other colour options available



Black



adaptV600 Adaptations

Head & Neck Supports	Code
Articulated Telescopic - Crescent Pad	VTHC
Articulated Telescopic - Medium Winged Pad	VTHM
Articulated Telescopic - Large Winged Pad	VTHL

Air Cell Options (Back) Placed to suit	Code
Articulated Telescopic - Crescent Pad	LUM
Articulated Telescopic - Medium Winged Pad	/3LUM
Thoracic Support	/THOR
Vertical Support (L, R or Both)	VSL/VSR
Sacral Support Cell	SACR

Arm Options Fully Customisable	Code
Height Adjustable Arms - PU pad	HAA
Rotating Arms	WSARM
HAA Arms + retractable pad	1234
3D Trigger Arms	3DTARM
4D Arms	4DARM
Mobile Support Arms (pair)	MSA
Gel Arm Pads (pair)	GEL
P Shaped Arm Pads (pair)	UPARM

Seat Options	Code
Coccyx Cut Out - Approx. 120 x 100mm	/CC
Coccyx Comfort Zone	/CZ
Inflatable Thigh Support	/TS
Reduced Seat Width (min 410 mm)	REDW
Reduced Seat Depth (min 340 mm with slide)	REDD
Memory Foam Seat (additional layer)	MFS
ErgoCore Seat System	ECORE
Super Memory Foam Seat (stitched)	SMFS

Gas Lifts *approximate heights	Code
Gas Lift 1 - (Seat Height 410 - 520mm)	GAS1
Gas Lift 2 - (Seat Height 470 - 620mm)	GAS2
Gas Lift 3 - (Seat Height 610 - 810mm)	GAS3

Bases and Castors	Code
Polished Aluminium Base	/CHR
Brake Loaded Castors (set of 5)	BLC
Brake Loaded Castors (set of 5)	BUC
Lockable Castors (set of 5)	LOC
Soft Wheel Castors (set of 5)	SWC

Mobility Adaptations	Code
Movement Lock (includes 7" or 9" Non Swivel Gas)	MLOCK
Lever Operated Swivel Lock 7"	SLOCK7
Lever Operated Swivel Lock 9"	SLOCK9



adaptV600

Contact Wyvern Business Systems today for further information

OrangeboxJoy

This version is designed for office use and is suitable for most users. The chair is designed to be easily adjustable for different staff and is designed with position markers that allow each user to quickly find their preferred settings even if someone else has re-adjusted the chair.

The Orangebox Joy OH chair comes in high back with sliding seat and lumbar support as standard. Orangebox Joy OH chair also has the exclusive addition of a 3 degree forward-tilt on the seat for those who prefer the forward seated position. The forward-tilt can be engaged and disengaged using an easy-to-reach lever. This chair is available in fabric/mesh options.



OrangeboxJoy Range



OrangeboxJoy OH

	Seat Height	Back Width / Height	Seat Width / Depth
Orangebox Joy OH	450 - 585 mm	470 / 545 - 615 mm	485 / 395 - 460 mm

Product Options



Armrests



Base

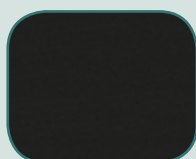


Seat



Castors

Standard Colour Options other colour options available



Black



Navy



Royal

orangebox

Flo is designed for maximum fit with minimum fuss and uncomplicated set up. With its market leading index system for individual accurate set up and wide range of travel adjustment features the chair is ideal for shared workstations.

The Flo outperforms other chairs for use with small and taller users and with new contouring on the seat, seat slide and a new flat ergonomic base and extended gas lift, the Flo ensures the widest range of users can work more productively.



OrangeboxFlo (high back)



OrangeboxFlo (high back with headrest)

	Seat Height	Back Width / Height	Seat Width / Depth
FLO medium back	460 - 620 mm	485 / 535 - 635 mm	520 / 400 - 500 mm
FLO high back	435 - 550 mm	485 / 585 - 685 mm	520 / 400 - 500 mm

Product Options



Armrests



Seat



Headrest



Castors

Standard Colour Options other colour options available



Black



Navy



Royal

orangebox

OrangeboxEva

Eva is the new generation of 'light touch' task seating it is simpler to set up and in need of fewer adjustments. In fact, the chair makes many of the adjustments itself as it's made of very few, very precisely engineered parts.

The combination of 100mm of height adjustment and rotating soft-touch armpads with forward safety lock makes these the most functional armrests as standard.

With a user weight range of 50 - 150 kg makes this a good chair for multi-users.



OrangeboxEva Range

	Seat Height	Back Width / Height	Seat Width / Depth
Eva	420 - 570 mm	1044 mm	515 / 470 mm

Product Options



Armrests



Base

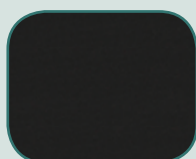


Back



Castors

Standard Colour Options other colour options available



Black



Navy



Royal

orangebox

OrangeboxSpira Plus

Suitable for users between 8.5 and 23.5 stone. Sculpted backrest with lumbar and pelvic adjustable support. Up to 20 degrees of recline.

Whilst this chair is suitable for across the range of sizes, it is particularly useful for tall people whose height is in their back.



OrangeboxSpira Plus (mid back)



OrangeboxSpira Plus (high back)

	Seat Slide Range	Seat Height	Back Width / Height	Seat Width / Depth
Spira Plus (Mid Back)	50 mm	465 - 635 mm	490 / 475 - 545 mm	460 / 420 - 470 mm
Spira Plus (High Back)	50 mm	465 - 635 mm	485 / 595 - 665 mm	520 / 400 - 500 mm

Product Options



Armrests



Back



Seat



Headrest



Castors

Standard Colour Options other colour options available



Black



Navy



Royal

orangebox

DESIGNED FOR HUMAN PERFORMANCE

You deserve a chair that is right for your body.

With RH Logic, you can choose a high (400) or low back (300) and a number of other design features.

The result is a comfortable chair that helps you to perform better throughout the working day. RH Logic is also available as a 24/7 and ESD friendly chair.

The Elite version also features an additional 20mm layer of foam across the seat and back pad for improved ventilation.



RHLogic 300



RHLogic 400

	Seat Slide Range	Back Width / Height	Seat Width / Depth
RH Logic 300 & Elite	60mm	440 / 620 mm	465 / 475 mm
RH Logic 400 & Elite	60mm	440 / 620 mm	465 / 475 mm
RH Logic 400 XL	60mm	440 / 620 mm	485 / 515 mm

Product Options



Armrests



Back



Base



Gas Lift

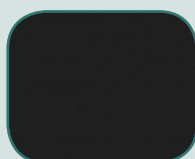


Neckrest



Seat

Standard Colour Options other colour options available



Black



Navy



Royal



RH Mereo200 / 220

A small adjustment is all it takes to fit RH Mereo for any user. The tall, narrow back with lumbar support has a soft curve to support the whole back. The cushioned area between the shoulder blades stimulates an open posture and the waterfall seat reduces pressure on the thighs.

The rear edge is raised to maintain correct position of the pelvis. With user friendly controls, adjustable arms and a head rest option, this chair is for personal and wide office use. The Mereo 200 has a smaller back but all other measurements and options apply.



RH Mereo 200



RH Mereo 220

	Seat Slide Range	Back Width / Height	Seat Width / Depth
RH Mereo 200	100mm	452 / 478 mm	425 / 466 mm
RH Mereo 220	100mm	474 / 632 mm	425 / 466 mm

Product Options



Armrests



Back



Base



Gas Lift



Neckrest



Castors

Standard Colour Options other colour options available



Black



Navy



Royal



RHActiv200 / 220 / 222

The RH entry level chair is packed with ergonomic features and functions. A chair for anyone, anywhere. Available in RH standard fabrics and colours as well as ESD and cleanroom versions. You can customise this range with a range of accessories. Backrest pads and seat pads can be easily changed out - no need to replace the chair.

The 200 and 220 models can be fitted with a 30mm thicker pad for more comfort, ideal for retail counters, and the 222 models come with a large seat pad and back pad.



RHActiv 200 (with Arms)



RHActiv 220 (with Arms)



RHActiv 220 (High Gas + Footring)

	Seat Height	Back Width / Height	Seat Width / Depth
RH Activ 200	397 - 527 mm	370 / 295 mm	440 / 430 mm
RH Activ 220	397 - 527 mm	370 / 430 mm	440 / 430 mm
RH Activ 222	397 - 527 mm	370 / 430 mm	460 / 460 mm

Product Options



Armrests



Back



Base



Gas Lift

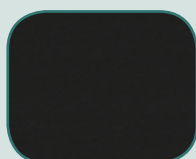


Neckrest



Seat

Standard Colour Options other colour options available



Black



Navy



Royal



Neck Supports	Code
Neck rest RH 400 (Leather, Height and Depth Adjustable)	LTRNR
Neck rest RH300/400 (In standard fabric, height and depth adjustable)	NR
Neck rest Mereo (fabric)	NRMERO
Arm Options	Code
Armrest 8S pair (grey). Adjustable in height and width. Rotating	8SARM
Armrest 8S class A pair (grey). Adjustable in height and width. Rotating. Higher	8SCAARM
Armrest 8S XL A pair (grey). Adjustable in height and width. Rotating. Leather top	8XLARM
Armrest 8E pair (grey). Adjustable in height, depth and width.	8EARM
Armrest 8E class A pair (grey). Adjustable in height, depth and width	8ECAARM
Armrest Mereo 8T. Adjustable in height, depth, width and turnable	8TARM
Back & Seat Options	Code
Lumbar Pump	LP
Coccyx Seat	CCX
Seat with Memory Foam	MEMSEAT
Gas Lifts	Code
Gas stem 4Q Black	4QB
Gas stem A Silver	AS
Gas stem A Black	AB
Gas stem B Silver	BS
Gas stem B Black	BB
Bases and Castors	Code
Base 5X Black - 660mm, 5-star, black aluminium	Standard
Base 5 X Polished - 660mm, 5-star, polished aluminium	ALU
Lockable Castors (set of 5)	LOC
Hard Floor Castors (set of 5)	HFC

**Contact Wyvern Business Systems
today for further information**

HÅG SoFi

The HÅG SoFi Mesh model with a mesh back incorporates market-leading technology, and beautiful aesthetics, to provide a seating solution that offers great design, supreme comfort and endless flexibility. All features and mechanisms are compact and hidden away. Designed to help energise the user, the HÅG SoFi mesh chair helps improve focus and general well-being. The unique HÅG centre tilt mechanism ensures subconscious movement. SoFi 7200 has the in balance technology and a medium height backrest. The SoFi 7300 has a high back rest.



HÅGSoFi (med back)



HÅGSoFi (high back)



HÅGSoFi Mesh (high back)

	Seat Height	Back Width / Height	Seat Width / Depth
SoFi 7200	396 - 543 mm	600 - 715 / 627 mm	450 / 389 - 442 mm
SoFi 7300	396 - 543 mm	600 - 715 / 718 mm	450 / 389 - 442 mm
SoFi Mesh 7500	395 - 530 mm	580 - 680 / 590 mm	430 / 390 - 485 mm

Product Options



Armrests



Back



Base



Gas Lift

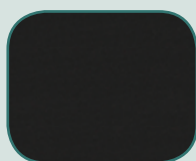


Neckrest



Castors

Standard Colour Options other colour options available



Black



Navy

The HÅG logo, featuring the word 'HÅG' in a bold, serif font with a red dot above the 'A'.

HÅG H03 / H04 / H05

The HÅG H03 collection is a great favourite amongst educational establishments. They have a unique tilting mechanism that allows you to sit in balance whilst simultaneously encouraging healthy movement and variation of posture, and can easily be adjusted for different users regardless of their height and weight.

The HÅG H04 range, in addition to Balanced Movement Mechanism (balanced, flowing tilt function backwards and forward), offers forward and backwards tilt tension and seat depth adjustment.

The HÅG H05 range has BMM and 4-in-1 adjustment. It offers soft, supportive cushioning in the back and seat. It comes fully or part upholstered in a range of back sizes.



H03 330



H04 4600



H05 5300

	Seat Range	Back Width / Height	Seat Width / Depth
HÅG H03 / 330	390 - 530mm	- / 380 mm	430 / 390 - 490 mm
HÅG H04 / 4600	395 - 530mm	580 - 680 / 590 mm	430 / 390 - 485 mm
HÅG H05 / 5300	390 - 515mm	600 - 700 / 475 mm	450 / 385 - 480 mm

Product Options



Armrests



Back



Base



Gas Lift

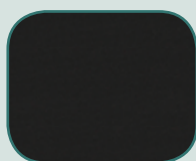


Headrest



Footrest

Standard Colour Options other colour options available



Black



Navy



Royal

HÅG

BMA Axia 2.0 Range

A PERFECT BALANCE OF ERGONOMICS, FUNCTION AND STYLE

The Axia Office Chair Range offers the dynamic seating option. The seat and backrest move in concert, ensuring the correct support for the pelvis while the angle between back and seat remains the same.

The armrests do not move with the chair in the dynamic seating position. This ensures that, while you are working, the armrests remain in the same position relative to your desk. In this way, the lower arms receive optimum support in any posture and the user cannot become jammed between the armrests and the desk. The armrests can be adjusted to the required width and ideal height: as an extension of the desktop. Comes with black synthetic base, carpet castors and gas stem for seat height 40 - 55cms as standard.



BMA Axia 2.4



BMA Axia 2.5

	Seat Length / Width	Back Height / Width
Axia 2.1 (Low Back)	(A) 470 / 480 mm	390 / 450 mm
Axia 2.2 (High Back)	(A) 470 / 480 mm	470 / 450 mm
Axia 2.3 (High & Thick Back)	(XL) 470 / 490 mm	470 / 450 mm
Axia 2.4 (Extra High & Thick Back)	(XL) 470 / 490 mm	540 / 460 mm
Axia 2.5 (Mesh Back)	(A) 470 / 480 mm	560 / 460 mm

Product Options



Seat



Mechanism



Base



Armrests



Gas Stem



Headrest

Standard Colour Options other colour options available



Black



Oceanic



BMA Axia 2.0 Adaptions



Back Rest Options	Code
Axia 2.1 Backrest	2.1
Axia 2.2 Backrest	2.2
Axia 2.3 Backrest	2.3
Axia 2.4 Backrest	2.4
Axia 2.5 Backrest	2.5

Seat Options	Code
Standard Backrest (470 x 480 x 60mm)	A
XL Backrest (470 x 490 x 70mm)	XL
XXL Backrest (510 x 520 x 70mm)	XXL

Base Options	Code
Standard Black Plastic	BLKBASE
Polished Aluminium	ALUBASE

Frame Options	Code
Standard Black	BLK
XL Backrest	WHT

Mechanism Options	Code
Mechanism A - (Seat height – Seat depth, Seat angle – Dyn. sitting, Back height, Back angle)	A
Mechanism B - (Seat height – Seat depth, Seat angle – Dyn. sitting, Back height)	B
Mechanism D - (Seat height – Seat depth (+4cm), Seat angle – Dyn. sitting, Back height – Back angle)	D

Options and Personalisation	Code
Adjustable Headrest	HREST
Modified Headrest	MHREST
Coat Hangar	CHANGER
XL Multi-Armrests	XLARM
Modified Armrests	MARM
Contrast Stitching	CSTITCH
Inflatable Lumbar Support	INFLUM
Dacron and memory foam	MEMFOAM
Coccyx Recess	CCX

Gas Stems	Code
Standard Gas Stem (Seat Height 400 - 550 mm)	S
Lower Gas Stem (Seat Height 390 - 520 mm)	LW
Larger Gas Stem (Seat Height 450 - 600 mm)	L
XL Gas Stem (Seat Height 520 - 710 mm)	XL
XXL Gas Stem (Seat Height 570 - 820 mm)	XXL

Contact Wyvern Business Systems today for further information

DESIGNED FOR STYLE AND SUPERIOR COMFORT



Mesh i29 (Side View)



Mesh i29 (Front View)

i29 is a revolution in Ergonomic seating. With multi-patented features, including the lumbar and pelvic support system and intuitive controls, it is simple for any user to quickly adjust and sit comfortably, correctly supported with dynamic movement from the moment they sit in the chair.

As well as being packed full of features the chair offers a range of frame finish options such as white, black, grey and even gold if you are feeling bold, allowing you to customise the chair uniquely to you. A range of six different styles of mesh, leather and fabric, in many colours can really make your i29 unique.

	Seat Range	Back Width / Height	Seat Width / Depth
Mesh i29	440 - 530 mm	500 / 570 - 620 mm	490 / 510 - 550 mm

Product Options



Back



Base



Seat



Arms



Mechanism

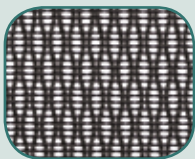


Headrest

Standard Colour Options other colour options available



Black Fabric



Black Mesh



DESIGNED FOR ULTIMATE SUPPORT AND FUNCTIONALITY

V46 is a breakthrough in ergonomic seating. Patented lumbar/pelvic support and intuitive controls enable users of any size and shape to easily adjust the seat for superior support and dynamic movement from the moment they sit in the chair.



Mesh V46



Mesh V46

	Seat Height	Back Width / Height	Seat Width / Depth
Mesh V46	480 - 570 mm	500 / 570 - 620 mm	490 / 510 mm

Product Options



Back



Base



Seat



Arms



Mechanism

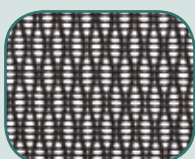


Headrest

Standard Colour Options other colour options available



Black Fabric



Black Mesh



Specialist Seating for active users and Mobile environments

Workers in fast-paced environments, or areas where they need to transition between a seating and standing position regularly still need comfort and support.

There are a wide range of sit-stand stools and seating options available on the market, ideal for workers in environments such as healthcare, culinary, hot desk areas and more.



RH Support Saddle Stool 4501



HÅG Capisco 8106

Chairs for Disabled Users and Bariatric requirements



VELA Tango 200



BodyBilt 3504 - Big and Tall

VELA Tango is a series of work chairs developed to enable the user to keep the usual level of activity and independence at home and at work – despite the user's disability.

A unique central brake ensures that users have a stable work place and four smoothly running and stable wheels make the chair easy to 'walk'.

Users that need a larger chair can benefit from chairs such as the BodyBilt Big and Tall range, with comfort and support for the larger user.

The iconic saddle seat and the integrated arm design allows for a wide range of dynamic sitting positions. It is also perfect for 'backward' sitting whereby the back becomes a chest support. Full upholstered with generous padding this chair can be used as a support stool or an office chair. The Capisco can be adjusted from low seated position to sit-stand position and comes with a variety of stem heights and option of a foot plate which moves with the chair. For shorter people this acts as a step up. The Capisco also comes with a conventionally shaped seat, headrest option and stool option (minus back).



HÅG Capisco 8106



HÅG Capisco 8107 (with headrest)

	Seat Range	Back Width / Height	Seat Width / Depth
Capisco 8106	408 - 540mm	595 / 460 mm	470 / 340 - 420 mm
Capisco 8107 (with Headrest)	408 - 540mm	595 / 460 mm	470 / 340 - 420 mm

Product Options



Back



Base



Seat

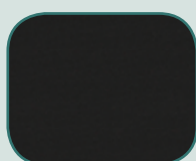


Footring



StepUp

Standard Colour Options other colour options available



Black



Navy



HÅG Capisco Puls

The later version of the upholstered Capisco, the Puls, is moulded polyurethane: wipe clean and durable whilst giving same saddle shaped support. It has a padded seat cushion and back pad. On the 8020 model the seat pad is removable for cleaning or replacement. The Puls is also available without the back rest.



HÅG Capisco Puls 8001



HÅG Capisco Puls 8010



HÅG Capisco Puls 8020

	Seat Slide Range	Seat Height	Back Width / Height	Seat Width / Depth
Capisco 8020	70 mm	402 - 536 mm	565 / 400 mm	460 / 400 - 470 mm

Product Options



Back



Base

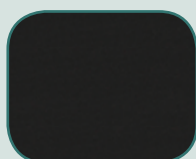


Seat



StepUp

Standard Colour Options other colour options available



Black



Navy



MORE SUPPORT AT WORK

The RH Support are a range of ergonomic work chairs especially developed for those who need extra relief for backs and legs when working in a standing position. The RH Support can also be used for lower working positions. The wide range of accessories enables flexible adjustment to individual requirements and work tasks. The chair is available with (model number ends in 1) or without backrest (model ends in 2).



RH Support 4502
(Saddle)



RH Support 4512
(Round)



RH Support 4521
(Limpan + Footring)



RH Support 4532
(Froli Foam Seat)

	Seat Height	Seat Width / Depth	*Backrest Width / Height
RH 4501 / 4502 (Saddle Seat)	565 - 810 mm	410 / 380 mm	*4501 Only - 380 / 230 mm
RH 4511 / 4512 (Round Seat)	580 - 825 mm	350 mm (Diameter)	*4511 Only - 380 / 230 mm
RH 4521 / 4522 (Limpan Seat)	565 - 810 mm	450 / 240 mm	*4521 Only - 380 / 230 mm
RH 4532 (Froli Foam Seat)	580 - 825 mm	410 / 380 mm	N/A - Moulded Seat
RH 4545 (Chest Support)	580 - 825 mm	350 / 350 mm	220 / 260 mm

Product Options



Backrest



Base



Seat



Gas Stem

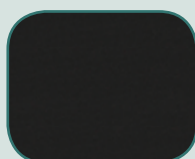


Footring



Castors

Standard Colour Options other colour options available



Black



Navy



Royal



VELA Tango 200 / 500

VELA Tango is a series of work chairs developed to enable the user to keep the usual level of activity and independence at home and at the work place – despite disability.

The electrical height adjustment on EI models makes it possible, e.g., for people with mobility problems to get up and sit down on their own or reach the top cupboard while sitting in the chair. A unique central brake ensures that the user has a stable workplace.

VELA Tango 500 has a revolutionary, two-part ALB backrest which provides a high level of support for an active and varied, ergonomic sitting position for people with disabilities who require extra comfort, support and safety.



VELA Tango 200 EI



VELA Tango 500 EI

	Seat Width / Depth	Seat Height	Back Width / Height
Tango 200	470 / 490 mm	380 - 720 mm	430 / 450 mm
Tango 200 EI	470 / 490 mm	380 - 720 mm	430 / 450 mm
Tango 500	470 / 490 mm	420 - 750mm	(Small) 390 / 390 mm
Tango 500 EI	470 / 490 mm	400 - 810mm	(Small) 390 / 390 mm

Product Options



Seat



Backrest



Seat Height



Frame

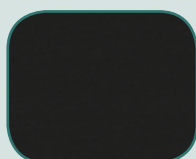


Castors



Accessories

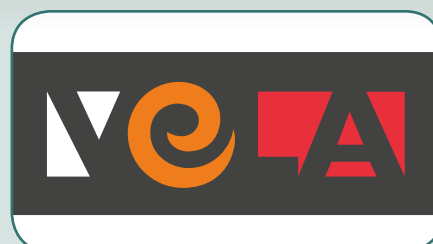
Standard Colour Options other colour options available



Black



Navy



BODYBILT J2504 BIG & TALL CHAIR IS BODYBILT'S UNIQUE HEAVY DUTY SEATING SOLUTION TO THE PROBLEMS FACED BY USERS OF ABOVE AVERAGE HEIGHT AND WEIGHT.

The 2504 Chair is a high back chair with a contoured broad seat styled to support proper ergonomic posture and even weight distribution so that leg muscles are relaxed.

The Big & Tall collection is BodyBilt's unique solution to the seating problems facing users of above average height and weight. This model features a reinforced seat structure that is 22% larger than average seats, accommodating workers above the 80th percentile. This chair is rated to support up to and over 35 stone.

Supplied as standard with multi-directional armrests, adjustable height and angle back, tilt mechanism and steel-reinforced frame.

Bodybilt 2504 does not have a headrest but the 3504 does.



BodyBilt 2504

BodyBilt 3504

	Seat Range	Back Width / Height	Seat Width / Depth
BodyBilt 2504 (No Headrest)	440 - 530mm	550 / 560 mm	660 / 530 - 590 mm
BodyBilt 3504 (With Headrest)	440 - 530mm	540 / 560 mm	660 / 530 - 590 mm

Product Options



Headrest

Standard Colour Options other colour options available



Black

BODYBILT®

A great chair needs a **great desk**

Besides an ergonomic chair, a relevant desk may be needed too. Desks are available in all manner of shapes and sizes, and with the inclusion of Height-Adjustable desks, the range is ever growing.

A Height-Adjustable desk allows users to work from a sitting or a standing position, ideal for users who can't sit down for too long, or who require a range of positions to work comfortably.

Some desks also come with the option of setting heights to memory, perfect for hotdesking and regular changes.

Whether you need a single desk for a user, or to outfit an entire office, we've got the solution available for you.



A SOLID DESK IS A GREAT START TO ANY WORKSPACE

A standard fixed-height desk is an ideal solution for most workers, providing a solid work surface for monitors, keyboard and mouse, and most other things that users need to perform. Available in a range of shapes and sizes, to suit any environment.

Static desks can be cantilever or panel ended, straight, or left or right hand returns or wave options.



Fixed Height Desk 1200 x 800 mm

Straight	Wave	Return
1000 x 800mm	N/A	N/A
1200 x 800mm	1200 x 990 mm	N/A
1400 x 800mm	1400 x 990 mm	1400 x 1200 mm
1600 x 800mm	1600 x 990 mm	1600 x 1200 mm
1800 x 800mm	N/A	1800 x 1200 mm

Product Options



Cantilever



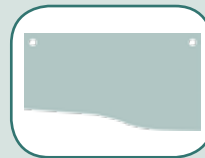
Panel Ended



Straight



Return



Wave

Standard Colour Options other colour options available



Beech



Oak



Maple



Height-Adjustable Desks

STAND OR SIT - WHICHEVER IS THE BEST FIT



Height Adjustable Desk 1200 x 800 mm

Available Standard Desk Sizes

1000 x 800mm

1200 x 800mm

1400 x 800mm

1600 x 800mm

1800 x 800mm

The modern day office consists of endless hours soaked up tapping into a keyboard sometimes to the exclusion of anything else, without the option to stand up an 'old school' static desk generates a very sedentary work lifestyle.

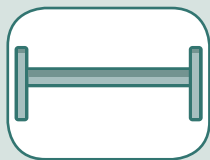
However a sit-stand, height-adjustable desk offers users the flexibility of working from either a seated or standing position, depending on your preference, perfect for users who wish to move between one or the other.

The adjustability is also ideal for Hot-Desk environments too, allowing users to quickly adjust and alter a desk to their personal requirements.

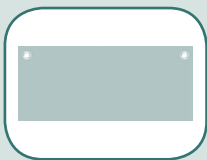


Height Adjustable Desk 1600 x 800 mm

Product Options



Frame



Shape



Load Capacity



Speed

Standard Colour Options other colour options available



Beech



Oak



Maple



COLLOBARATIVE SPACES AND MEETING ROOMS



Colloborative Work Space

Your business can display it's brands in many ways, from the sign above the door, corporate stationary and uniforms even to the decor and seating of meeting areas and colloborative spaces.

We have a wide range of soft-seating and adaptable work space options to outfit any meeting area, colloborative space or reception areas, and with a wide range of fabric colours and styles, they can be suited to any branding or look required.

Cwtch is a succinct sofa system available in low, midi and high back configurations, and designed to facilitate the creation of exciting, workable sociable clusters and landscapes of soft seating. The cool and elegant Cwtch sofa makes a dynamic architectural statement.

Available in numerous configurations, the Cwtch is catergorised into four broad catergories;

Cwtch Low:

Available with a straight or curved corner and options of a dock with power/data and a small table.

Cwtch Midi:

Available as either a three or four seater, with an extended back and options of tabling, the Cwtch Midi offers affordable seating.

Cwtch High:

A high backed version of the Cwtch, the Cwtch High is a best-seller, allowing privacy working even in open-plan spaces.

Cwtch Media:

A variant of the Cwtch that forms a booth, it can be specified with power/data and a large format monitor.



Cwtch Low Back Three Seater



Cwtch Four Seater with Table & Monitor

REPRESENT YOUR BRAND WITH YOUR RECEPTION AREA SEATING

For many customers, when they first arrive in your reception area, that's the first impression of your company, so ditch those old tattered sofas, and represent your brand with luxurious sofas in your company colours for a lasting first impression.

The VALE and PEEPS are affordable, comfortable and stylish seating options suitable for reception areas, open spaces and waiting rooms.



Vale High Sofa

The Vale Sofa system is a collection of contemporary modular units, which can be combined to create dynamic layouts suitable for busy work, public or hospitality spaces.

Vale is available as a generous armchair, as a two, three or four-seat sofa, and as a more expansive combination of linking units.

Vale has been meticulously designed so that adjacent units share a central leg when linked together, creating a simple, clean and uncluttered impression.

Vale also has its own range of tables. These are available in three sizes, with two top types offered in a variety of melamine and real wood veneer finishes.



Vale High Sofa

Peeps reworks the classic 1970s sofa, giving it a contemporary twist.

Available as an armchair, two-seat or three-seat sofa, Peeps is constructed on a traditional wood frame, with shaped and applied foam upholstery. A simple and elegant upholstery line defines the back, meaning it works equally well in a plain fabric and in a more exuberant print.



Peeps Sofa & Peeps Armchair

ERGONOMICS IS MORE THAN A DESK AND CHAIR

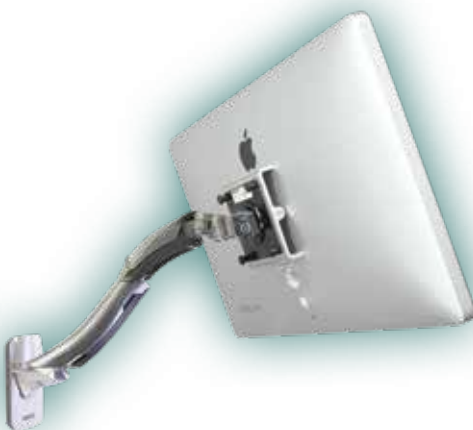
From mice to keyboards, carry cases and monitor arms, Ergonomics can encompass so much more than just a chair and desk, there is a variety of items available that can further support a user for long-term desk use.



Evoluent Vertical Mouse



Microsoft Sculpt Keyboard



Ergotron MX Monitor Arm



Targus Rolling Backpack

AN ASSORTMENT OF SPECIALIST MICE

Wyvern are able to offer a broad range of input devices, such as Vertical Mice, Trackballs, Ambidextrous mice, touchpads, joysticks and more!



Microsoft Sculpt Mouse



Evoluent Vertical Mouse



Penguin Ambidextrous Mouse



Oyster Ambidextrous Mouse



Handshoe Mouse



DXT2 Precision Mouse



Logitech M570 Trackball



Kensington Orbit Trackball



Kensington Expert Trackball



3M Renaissance Joystick Mouse



Cirque Smart Cat Pro Touchpad



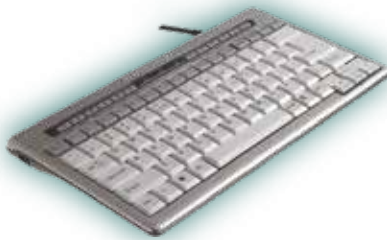
Contour RollerMouse

SPLIT-KEY, COMPACT OR CURVED

Keyboards also come in a variety of shapes and sizes, from compact, low profile keyboards, to curved, shaped or split keyboard devices.



Microsoft Sculpt Keyboard



Ergostars Saturnus Keyboard



Targus Compact Keyboard



Microsoft Natural 4000 Keyboard



Goldtouch Split Keyboard



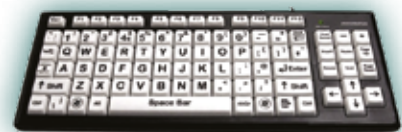
Goldtouch Go



Fujitsu Siemens Split Keyboard



HiVis 260 Keyboard



Accuratus Large Key Keyboard



Logitech K400 Keyboard



Microsoft Arc Keyboard



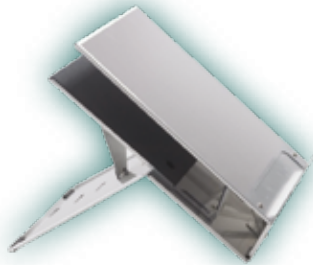
Standivarius Piano Keyboard

ERGONOMIC MOBILE WORKSTATIONS AND MONITOR STANDS

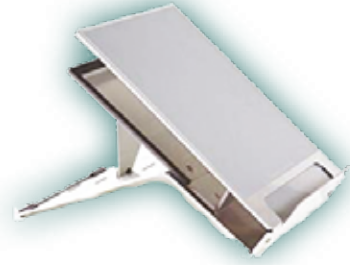
A laptop that is flat on a desk does not offer much in the way of Ergonomic support, requiring users to lean forward or stoop down to see the screen correctly, a Laptop stand raises the screen to a suitable eye-level ensuring an ergonomic posture. Monitor stands and arms also ensure that stand-alone Monitors are at the correct eye-level too.



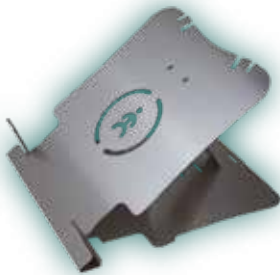
Kensington Easy Riser



Ergo-Q 220



Ergo-Q 330



Ergonomic Cafe U-Top



Ergonomic Cafe U-Top Pro



Standivarius Oryx Evo D



Standivarius Aero



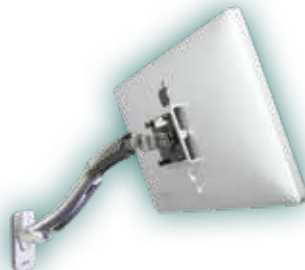
Posturite Easy Desk



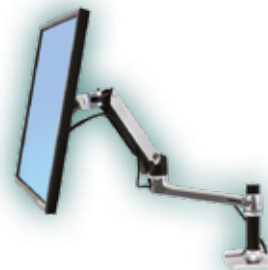
LeBloc Monitor Stand



Fellowes Monitor Raiser



Ergotron MX Monitor Arm



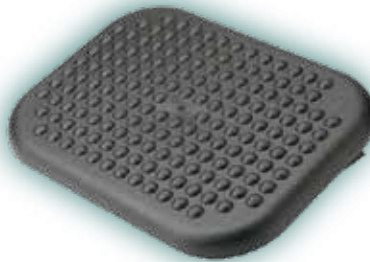
Ergotron LX Monitor Arm

DON'T FORGET TO PUT YOUR FEET UP

Perfect posture often requires an additional step, or rather a foot rest! By raising a user's feet, a footrest encourages better posture, and those that offer a rocking motion or movement can reduce fatigue and discomfort for sustained lengths of time.



Adjustable Tilting Footrest



Comfort Footrest



Footform Dual Footrest



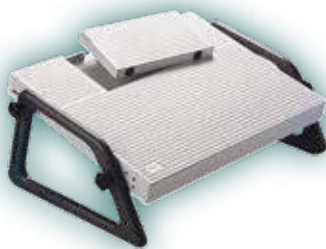
HÅG Quickstep Footrest



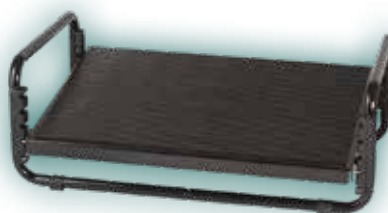
Score Basic 952 Footrest



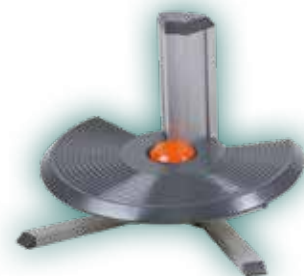
Score Pro 959 Footrest



Wedo Relax Footrest



Plum Adjustable Footrest



Discus Adjustable Tilt Footrest



Fellowes Foot Rocker



Adjustable Leg Rest with feet



Adjustable Leg Rest with castors

Document Holders

SAVE YOUR BACK AND NECK FROM THE PAIN OF THE STRAIN

Imagine you've got a piece of paper on your desk, look down at it, feel that in your back and neck? A document holder keeps everything at eye-level, no strain, no pain, just simple, fluid ergonomics. Writing slopes assist further, allowing you to write with good old fashioned pen and paper without having to lean over your desk too!



Fellowes Copyholder



3M Screen Document Holder



A4 Bookchair



Fellowes Weighted Copyholder



DocuRite Document Slope



Levo Book Holder



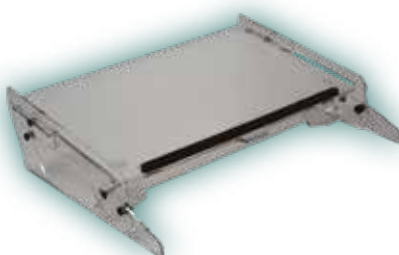
Flexdesk 630N Writing Slope



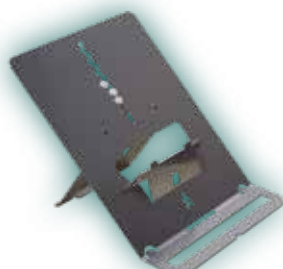
Ergonomic Cafe Clear Copy



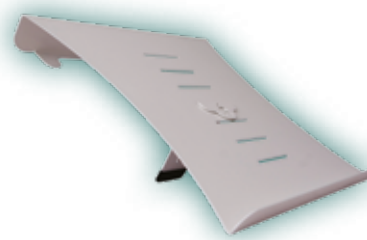
Ergonomic Cafe Clear Slope Pro



Ergonomic Cafe Go Slide



Ergonomic Cafe Go Mobile



Ergonomic Cafe U-Turn

IMPROVE YOUR POSTURE BY UTILISING A HEADSET

We've all done it, you've answered the phone, and in the course of the call, you need to write some notes on a piece of paper, so you hold the receiver between your shoulder and ear, putting strain on your neck and spine in the process. Users that are on the phone a lot (call centre staff, receptionists etc) can benefit massively from the freedom of having both hands to work while making calls, and this ergonomic benefit can be utilised by anyone with a headset.



Plantronics Voyager 5200 Bluetooth Headset



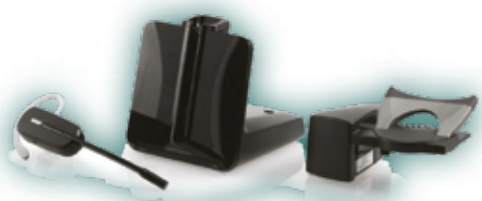
Plantronics SupraPlus HW261N Wired



Plantronics CS510 Monaural Headset & Lifter



Plantronics CS520 Binaural Headset & Lifter



Plantronics CS540 Wireless Headset & Lifter



Jabra PRO 920 DECT Mono Headset



Jabra PRO 9450 Mono DECT Headset



Jabra PRO 9450 Duo DECT Headset

AND THERE'S EVEN MORE BESIDES THAT!

The previous pages are just some of the items that we can offer, we can also offer supportive products for almost every conceivable workstation related issue, including a range of ergonomic wrists rests, rolling carry cases, writing aids, lumbar supports and more, speak with our Ergonomics team if you've got an unsolved issue, and we almost guarantee to have a suitable suggestion that will work for you!



Kensington Gel Wrist Rests



Ergorest Desk Clamps



Handy Forearm Support



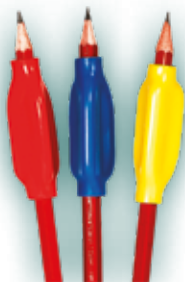
Goldtouch Wrist Rests



Mousebean® Hand Rest



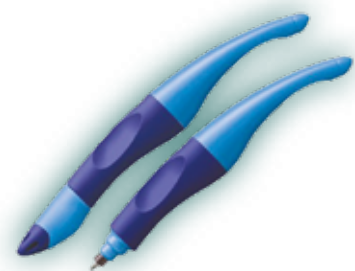
WASP Wrist Rests



Hard & Soft Pen Grips



PenAgain Ergo-Sof Ball Pen



Stabilo Easy Handwriting Pen



Backfriend (Single-Padded)



Backfriend (Double-Padded)



Backfriend Carry Case

Other Accessories



4" D-Shaped Lumbar Roll



5" D-Shaped Lumbar Roll



4" Circular Lumbar Roll



5" Circular Lumbar Roll



8-Degree Seat Wedge



8-Degree Coccyx Seat Wedge



11-Degree Seat Wedge



11-Degree Coccyx Seat Wedge



Inflatable Lumbar Support



Tech Air Rolling Backpack



Hypertec 2in1 Rolling Backpack



Aerolite 21" Trolley Case



Targus Rolling Backpack



Kensington Contour Roller Case



Wheelchair Bag

Assistive Technology

A man with short brown hair, wearing a blue t-shirt, is seated in a specialized black office chair. He is wearing a silver headset with a microphone. His hands are on a specialized joystick device with a wooden ball, which is connected to a computer system. The computer system includes a tower unit, a large monitor, and a keyboard. The background shows a wooden door and a window with blinds.

WYVERN ARE EXPERTS IN ASSISTIVE TECHNOLOGY

With decades of experience supplying assistive technology and software to thousands of DSA Students and ATW customers, we can offer a wide range of technology and programs, training and support across the entire spectrum of assistive technology.

AN ASSORTMENT OF SOLUTIONS TO IMPROVE QUALITY OF LIFE

There is a wide assortment of hearing support products that can vastly improve a hearing impaired user's quality of life, from personal Radio Systems to specialist alarms and induction loops, we have a selection of equipment that can assist in a variety of ways.



fmGenie Radio Aid System



Phonak Roger X Receiver



Phonak Roger 10 Receiver



Phonak Roger Pen Wireless Mic



Conversor Pro



ReSound Multi Mic



Comfort Contego Loop System



Digisystem DC20 Conference Mic

EQUIPMENT FOR VISUAL SUPPORT BRINGS THE WORLD ALIVE FOR VISUALLY IMPAIRED USERS

From screen reading software, to digital magnifiers, with such a wide range of options available, there are a lot of solutions we can offer to visually impaired users to enable them to utilise a computer as well as a fully sighted person.



Dolphin Magnifier / Screenreader Software



Zoomtext Magnifier / Screenreader Software



JAWS Screenreader Software



Kurzweil Screenreader Software



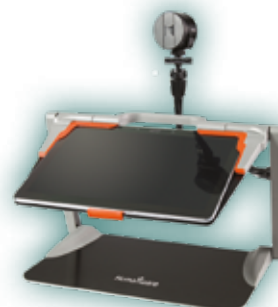
Ruby XL HD Portable Magnifier



ReadIt Scholar HD Magnifier



Pearl Camera with OpenBook Software



Prodigi Connect 12 Magnifier

ASSISTIVE SOFTWARE CAN BRING YOUR WORK TO LIFE

Assistive Software is Wyvern's speciality. Having supplied thousands of DSA (Disabled Students Allowance) students with a variety of assistive software, we're experts in the supply, training and support of assistive technology.

From text-to-speech programs, mind-mapping, voice recognition and spelling software, and more besides, we've got a wide range of options to suit anyone's individual requirements.

Text-to-Speech



TextHELP Read&Write and **ClaroRead** are the market leaders in Text-to-Speech software programmes.

Ideal for reading back your work, or resources from the web, these versatile programs are packed with additional features too, such as screen-rulers, text-highlighting, text-prediction, picture dictionaries and much more besides!

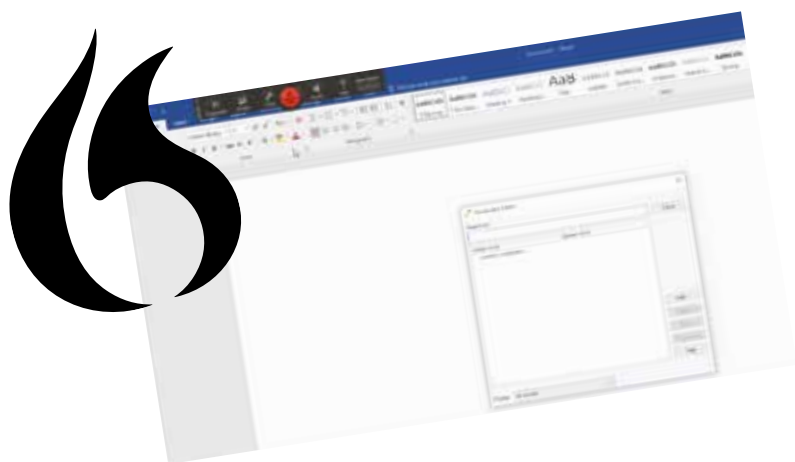
Annotation

Making sense of audio recordings is crucial, that's where programs such as **Sonocent Audio Notetaker** and **Notetalker** come into play.

They allow you to annotate transcriptions, link audio to power point slides and more besides! With a better representation of audio, you can really maximise the benefit of your audio recordings.



Assistive Software



Voice Recognition

Dragon Naturally Speaking is the perfect assistant, allowing you to dictate text directly to your computer, compose documents, emails, navigate between programs and more completely hands-free.

Compatible with a wide variety of programs within both Windows and Mac, unlock the power of the dragon.

Mind Mapping

Mind View and **Inspiration** are amongst the most popular mind mapping programs on the market, allowing you to not only visualise your ideas, but to convert them into a useable format. Other programs are available too, such as Mind Jet's **Mind Manager** and **Mind Genius** to name a few.

You can plan out an essay or report in a mind-map, use images for reference points, and then export text directly into word ready to go!



Spelling Software

SPELLEX




**Global
AutoCorrect™**

Spellementary

Spellex, **Global AutoCorrect**, **Spellementary** and **Medincle** are just some of the different spell-checking programs available to assist with spell-checking, grammar corrections and more.

Spellex and **Spellementary** offers a range of specialist vocabulary too, from Legal, Medical, Botanical, Veterinary and more, mix & match for more options too.

OCR

ABBYY FineReader and **Omnipage** are powerful software packages that allow you to scan a flat image, and pull out all of the text into an editable format, perfect for editing printed documents.



iView Learning



Tutorials Include:

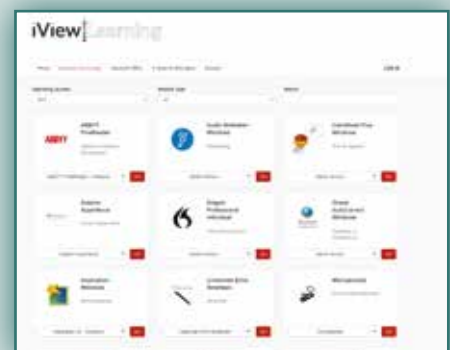
- Up to 90 second bite-size videos, for bite-size learning
 - Visual graphics to enhance the learning experience
 - Professional narrative
 - Optional subtitles for the videos
- Printable PDF guides for each video

In Addition:

- Available on multiple devices (i.e. laptop, phone, tablet)
- Cloud based with regular updates
- Interactive Tutorials to enhance learning.

iView Learning is our flagship Training system for Assistive Software programs and productivity software.

With comprehensive tutorials and guides on **Assistive Technology**, **Microsoft Office** and **Google Docs**, it is the perfect addition to your Assistive Technology software.



We are constantly adding more tutorials, as well as new modules entirely.

Below are some of the programs and topics that are currently available on **iView Learning**:



RECORD AUDIO, CAPTURE DATA AND MORE

No longer just the tool of a journalist, Digital Voice Recorders (DVRs) allow users to record useful information, such as lectures, meetings, events and any number of other interactions, even their own thoughts spoken out loud. Scanning pens can assist users with reading, enable data capture or offer electronic dictionaries for better reading comprehension.



Olympus DM-770 Digital Recorder



Olympus ME-34 Microphone



LiveScribe Echo 2GB Smartpen



C-Pen Reader Pen



ScanMarker Air Pen



IRIS Pen Air 7



WizCom Reading Pen TS



WizCom InfoScan TS

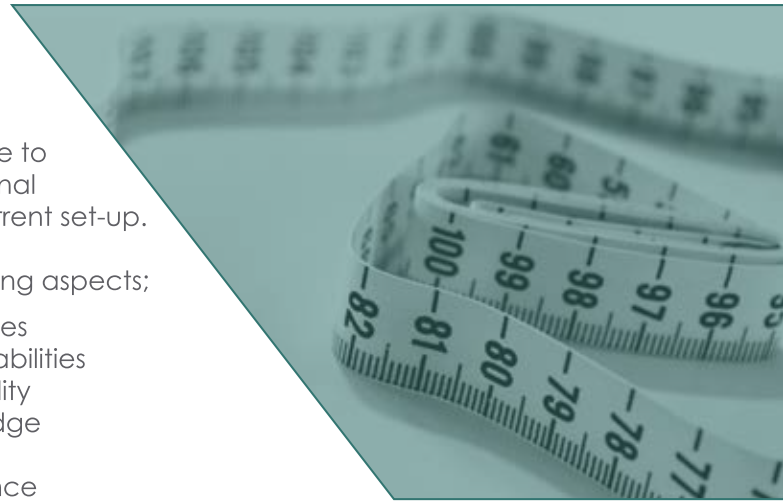
ERGONOMIC ASSESSMENTS

Wyvern have a team of specialist **D.S.E. Trained Assessors** who can offer a practical and impartial workstation assessment, with guidance and advice to adjust your current set-ups, and if required additional equipment recommendations to enhance the current set-up.

Assessments will take into consideration the following aspects;

User's requirements	The senses
Current equipment in use	Mental abilities
The physical environment	Personality
Body size and shape	Knowledge
Fitness and strength	Training
Posture	Experience

Assessments can take place throughout England and Wales, in any office or home environment. Our findings will be supplied to you in a concise but comprehensive and confidential report. Assessments are a cost effective solution to ensuring the well being of you, or your staff.



DSE ASSESSOR TRAINING

Looking to build upon your knowledge of DSE Assessments, Ergonomic Products and adjustment recommendations?

Why not try our **DSE Assessor CPD Training Course!**

Our course offers a comprehensive coverage of the following topics, as well as a CPD Certificate upon completion;

- Ergonomics
- The Musculoskeletal System
- Health & Safety at Work Act 1974
- Hazards and risks associated with DSE
- Suggesting effective ergonomic solutions
- Display Screen Equipment (DSE) Regulation
- Identifying potential hazards and the risks they present

PRODUCT AWARENESS TRAINING

Build your knowledge of products with our product awareness training, from keyboards to mice, chairs to desks, and everything in between!

Learn which products would suit particular conditions, and what products you may wish to avoid for others - such as when is best to recommend a vertical mouse, or when a static or adjustable footrest is the most suitable recommendation.

Delivered by our expert DSE Assessor team, they are happy to answer any and all questions that you may have about the options that are available, and when they will suit best.



HEALTH AND ADVICE

How do you know if you need a **DSE Assessment**?

The answer may be simpler than you think, if you or a colleague has ever had an issue with the following, then we would recommend that you have a DSE Assessment, in order to see what adjustments are required to alleviate this.

Lower Back Pain
Spinal Discomfort
Sciatica Pain
Headaches or Migraines

Eyestrain
Knee or Leg Ache
Repetitive Strain
Writing & Wrist disorders



ERGONOMIC CHAIR QUICK GUIDE

At a glance you can see how the assorted chairs we offer can suit different shapes and sizes;

Weight (Stones)	7 - 10	8 - 12	9 - 16	10 - 18	18 - 25	25+
Height (Feet / In)	5'-5'3"	5'3"-5'6"	5'6"-5'9"	5'9"-6'2"	6'2"+	
Adapt200	x					
Adapt500	x	x	x	x		
Adapt600 Range (610, 620, 630, 640)		x	x	x		
Adapt600 Range (650, 660, 680)				x		
Adapt700				x	x	x Max 40 Stone
Joy		x	x	x		
Flo		x	x	x		
Eva		x	x	x		
Spira Plus		x	x	x		
RH Activ	x	x	x			
RH 300 / 400		x	x	x		
RH Mereo		x	x	x		
HÅG SoFi		x	x	x		
HÅG H03 / H04 / H05		x	x	x		
BMA Axia 2.1		x	x	x		
BMA Axia 2.2 / 2.3		x	x	x		
BMA Axia 2.4		x	x	x		
Mesh i29		x	x	x		
Mesh V46		x	x	x		
BodyBilt 2504/3504					x	x Max 35 stone



The image features a modern office interior with large windows and a green and yellow modular sofa. A red banner with the word 'Wyvern' in white is positioned in the upper left, and a teal banner with the word 'Ergonomics' is below it. A teal banner at the bottom right contains contact information.

Wyvern

Ergonomics

01432 271 233

ergo@wbs.uk.com

www.wbs.uk.com